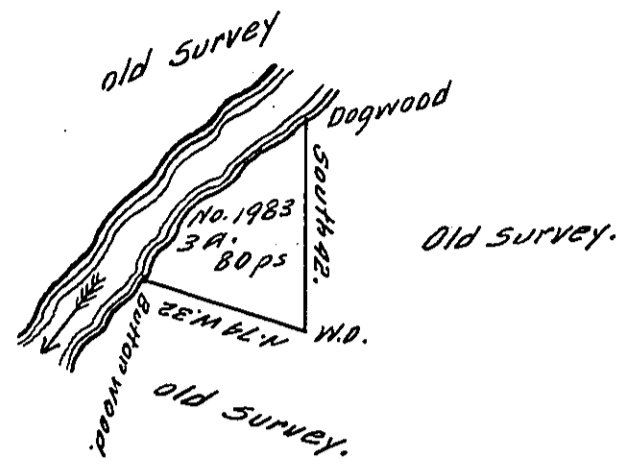


Courses up the Creek

*N. 50 E. 22 p.
N. 33 E. 10
N. 38 E. 13 1/2.*



Surveyed the above described Tract of Land on the 10th day of the 9th Month 1793 for Thomas & William Golagher & Richard Salmon, in pursuance of their Warrant No. 1983, dated October 9th 1792. Situate upon a Rock in pine Creek adjoining Grounds of Sundry persons old surveys.

Containing Three Acres & Eighty pches & the allowance of Six p. Cent.

William Ellis. D.S.

*Daniel Brodhead. Esq. }
Surveyor General. }*

IN TESTIMONY that the above is a copy of the original remaining on file in the Department of Internal Affairs of Pennsylvania, made conformably to an Act of Assembly approved the 16th day of February, 1833, I have hereunto set my Hand and caused the Seal of said Department to be affixed at Harrisburg, this twentyfirst day of August 1911

*Henry Horvick,
Secretary of Internal Affairs.*